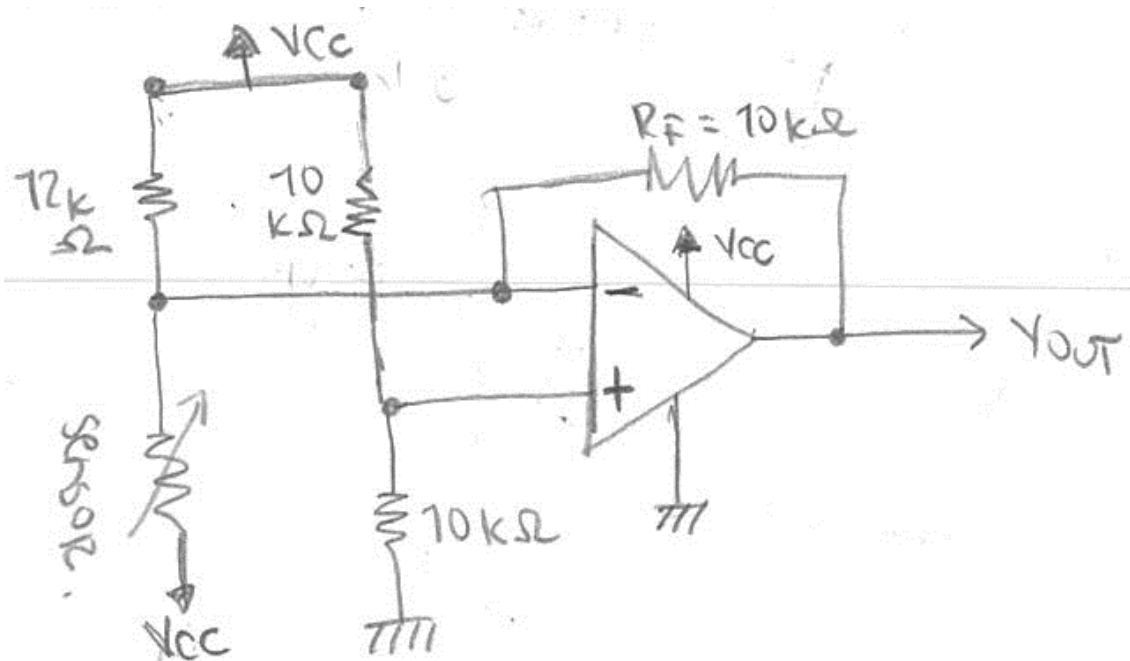


Flexi Force onto Spidar

The following flexiforce circuit was adapted to work with 24 V (DC). Because Spidar works with that voltage.



R_F is very important to this circuit. Because, the reference resistance is used to increase the sensor's sensitivity range. (R_F can have values from $1k\Omega$ to $100k\Omega$).

The previous circuit doesn't have any capacitors. It will work but the sensor's output will be very noisy. In order to have a cleaner output signal several capacitors were added into strategical places of the circuit.

